



TJERNLUND PRODUCTS, INC.

1601 Ninth Street • White Bear Lake, MN 55110-6794
PHONE (800) 255-4208 • (651) 426-2993 • FAX (651) 426-9547
Visit our web site • www.tjernlund.com

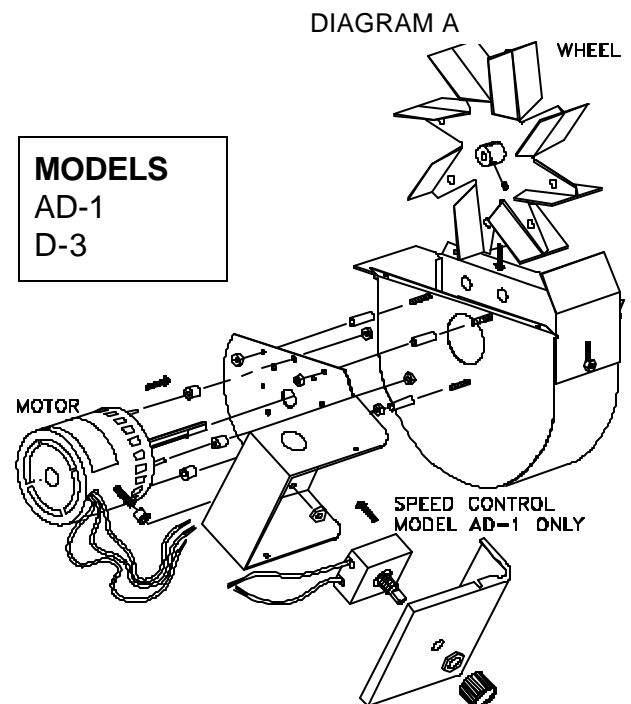
MODEL 950-3022 REPLACEMENT MOTOR KIT

▲ WARNING

1. Disconnect power supply before making wiring connections to prevent electrical shock and equipment damage.
2. All wiring must comply with applicable codes and ordinances.
3. When wiring is completed, check all components by running system through its entire heating cycle.
4. Check vent pipe system for leakage. All vent system leaks must be sealed prior to the installation of the Draft Inducer.
5. Flue gas temperature must not exceed 575⁰ F at Draft Inducer inlet.

MODELS D3 AND AD-1 MOTOR REPLACEMENT (DIAGRAM A)

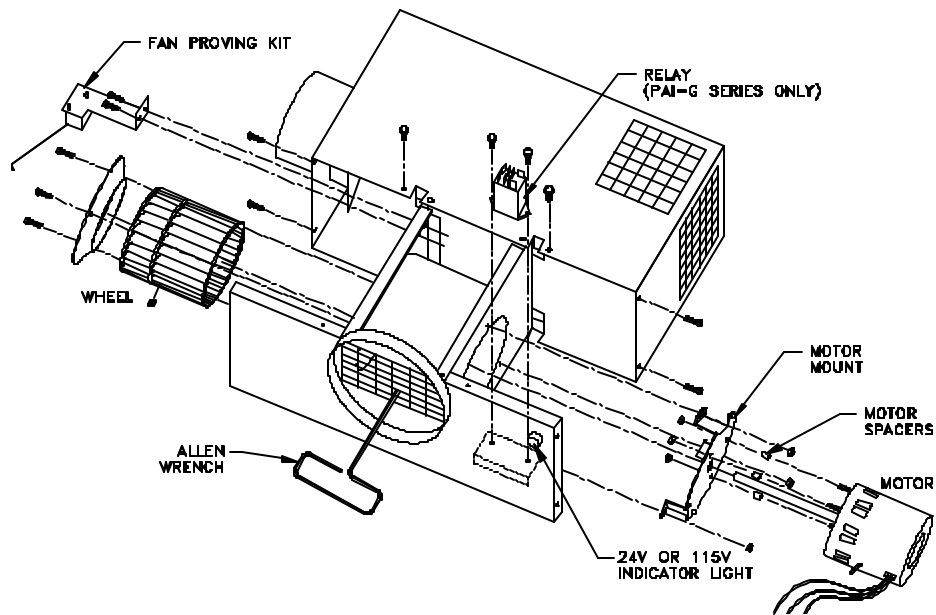
1. Loosen set screw on Draft Inducer wheel hub.
2. Remove nuts which attach motor mount to housing. Remove motor/mount assembly and remove defective motor. **NOTE: USE CARE SO FASTENERS ARE NOT LOST.**
3. To ensure proper performance and extended bearing life of the motor, inspect wheel and clean if necessary. Refer to the installation instructions of your unit for proper maintenance procedures.
4. Position new motor onto motor mount. Firmly fasten motor to motor mount using proper spacers, washers and nuts removed in step 2. Insert motor shaft into Draft Inducer wheel and attach motor/mount assembly to housing with nuts removed in step 2.
5. Tighten Draft Inducer wheel set screw onto flat of motor shaft. Spin the wheel by hand to ensure proper alignment and equal blade clearance on both housing sides.
6. Wire Draft Inducer according to appropriate diagram on page 3. If appropriate circuit does not appear, consult Tjernlund Products, Inc. at 800-255-4208. **UNIT MUST BE GROUNDED!** All wiring must be done in accordance with the NEC and applicable codes. The wiring from the appliance should be protected by overcurrent protection (fuses or circuit breakers) rated 15 amperes or less, as applicable for 14 AWG conductors. **EXTREME CAUTION MUST BE EXERCISED TO ENSURE THAT WIRING DOES NOT COME INTO CONTACT WITH ANY HEAT SOURCE.**
7. Check heater and Draft Inducer operation. Vari-Draft control on Draft Inducer should be adjusted so that there is no spillage at draft diverter, hood or barometric.



IN-FORCER PAI-1 & 2 SERIES WITH DATE CODES AFTER "9704" (DIAGRAM B)

1. Remove (6) screws from bottom front and sides of IN-FORCER while holding blower assembly firmly.
2. Carefully slide blower assembly down until stops hold blower unit in place.
3. Loosen set screw on wheel hub.
4. Remove nuts which attach motor mount to housing. Remove motor/mount assembly and remove defective motor. **NOTE: USE CARE SO FASTENERS ARE NOT LOST.**
5. Position new motor onto motor mount. Firmly fasten motor to motor mount using proper spacers, washers and nuts removed in step 4. Insert motor shaft into IN-FORCER wheel and attach motor/mount assembly to housing with nuts removed in step 4.
6. Secure IN-FORCER wheel by tightening set screw onto flat of motor shaft. Spin the wheel by hand to ensure proper alignment and equal wheel clearance on both housing sides.
7. Slide blower assembly back into housing and replace (6) screws removed in step 1.
8. Wire new motor according to appropriate IN-FORCER factory wiring diagram and run IN-FORCER and heating equipment through a couple of cycles to verify proper operation.

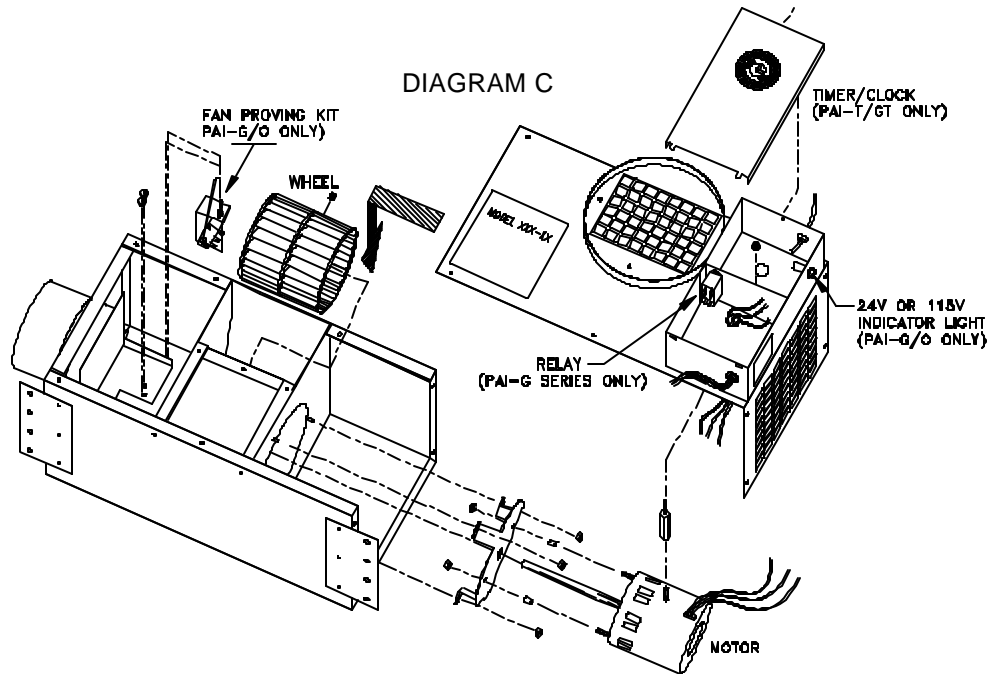
DIAGRAM B



IN-FORCER PAI-1 & 2 SERIES WITH DATE CODES PRIOR TO "9705" (DIAGRAM C)

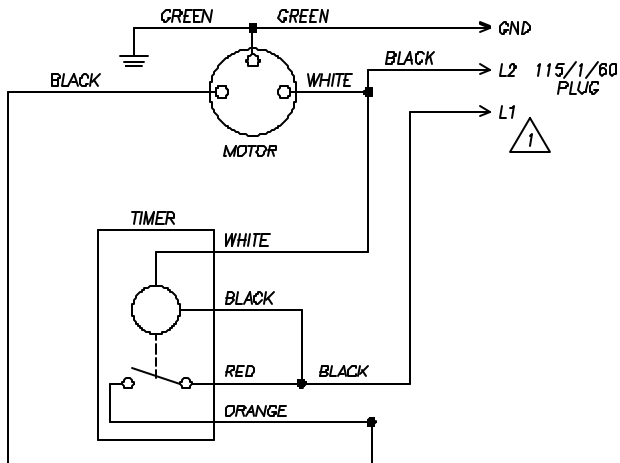
1. Remove (10) screws from top and side of IN-FORCER. Loosen and remove nut inside the electrical box while holding blower assembly firmly.
2. Cut crimped connectors on motor leads.
3. Carefully remove the bottom of IN-FORCER to see housing and motor assembly.
4. Loosen set screw on wheel hub.
5. Remove nuts which attach motor mount to housing. Remove motor/mount assembly and remove defective motor. **NOTE: SAVE MOTOR STUD SPACERS THAT ATTACH TO ELECTRICAL BOX.**
6. Position new motor onto motor mount. Firmly fasten motor to motor mount with proper spacers, washers and nuts removed in step 5. Replace spacers on motor stud that attaches to electrical box.
7. Insert motor shaft into IN-FORCER wheel and attach motor/mount assembly to housing with nuts removed in step 5.
8. Secure wheel by tightening set screw onto motor shaft. Spin the wheel by hand to ensure proper alignment and equal wheel clearance on both housing sides.

DIAGRAM C



9. Replace (10) screws removed in step 1. for IN-FORCER casing and replace motor stud nut.
10. Wire new motor according to appropriate IN-FORCER factory wiring diagram and run IN-FORCER and heating equipment through a couple of cycles to verify proper operation.

IN-FORCER PAI-T SERIES FACTORY WIRING



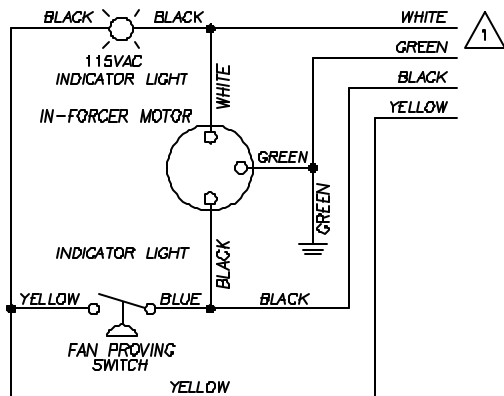
LEGEND

— DENOTES LINE VOLTAGE FACTORY WIRING
 ● DENOTES WIRE CONNECTOR

NOTES:

⚠ POWER SUPPLY, 6' POWER CORD SUPPLIED. OVERLOAD PROTECTION REQUIRED.

IN-FORCER PAI-O SERIES FACTORY WIRING

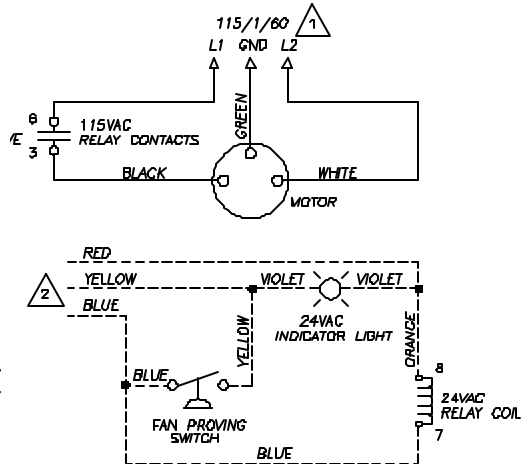


— DENOTES LINE VOLTAGE FACTORY.
 ● DENOTES WIRE CONNECTOR

NOTES:

1 CONNECT TO APPLIANCE CONTROLS AS OUTLINED IN WIRING INSTRUCTIONS SUPPLIED BY TJERNLUND PRODUCTS, INC.

IN-FORCER PAI-G SERIES FACTORY WIRING



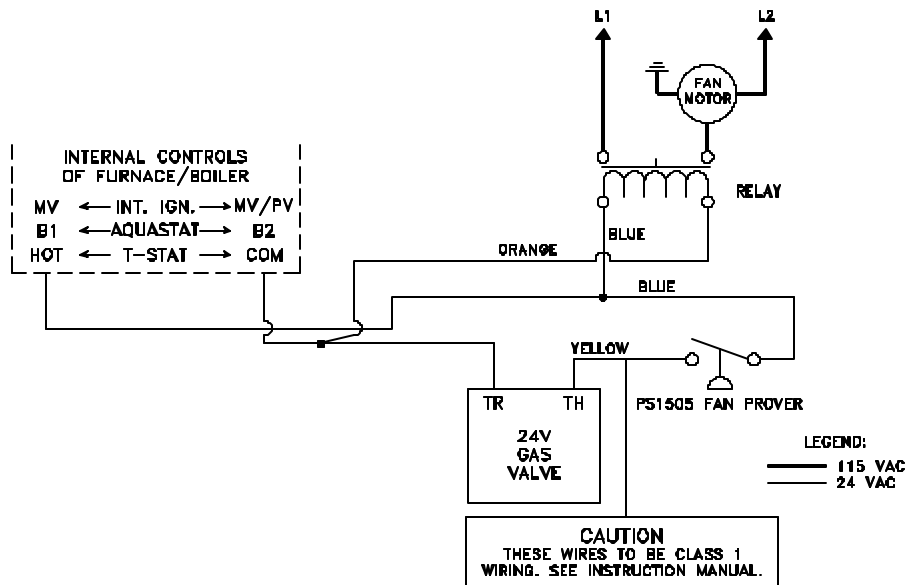
— DENOTES LINE VOLTAGE FACTORY
 - - - DENOTES LOW VOLTAGE FACTORY
 ■ DENOTES WIRE CONNECTOR.

NOTES:

1 POWER SUPPLY, 6' POWER CORD SUPPLIED, OVERLOAD PROTECTION REQUIRED.

2 CONNECT TO APPLIANCE CONTROLS AS OUTLINED IN WIRING INSTRUCTIONS SUPPLIED BY TJERNLUND PRODUCTS, INC.

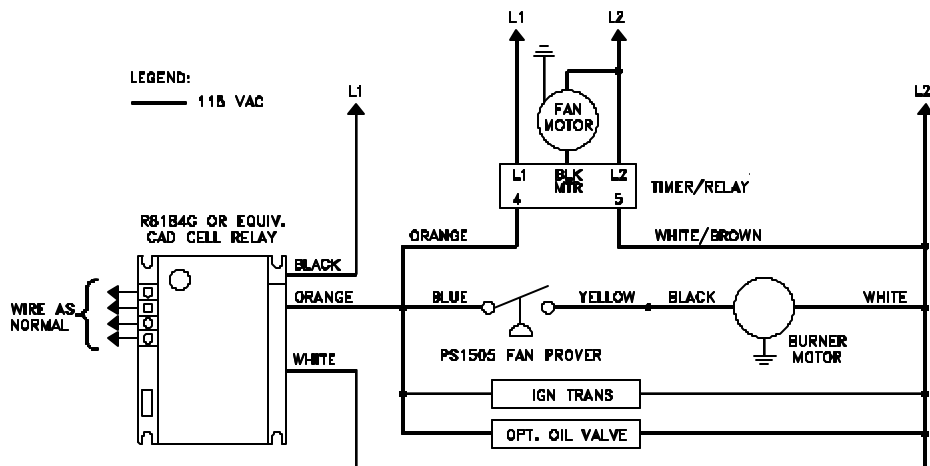
DRAFT INDUCER GAS WIRING TO ANY APPLIANCE EQUIPPED WITH 24V CONTROLS NO POST-PURGE RELAY/TIMER ON DRAFT INDUCER



COMPONENTS NEEDED:
 (1) DRAFT INDUCER
 (1) PS1505 FAN PROVER
 (1) 24/115V RELAY
 USE 950-1040 FOR MODELS DJ3 & D3

CAUTION
 THESE WIRES TO BE CLASS 1 WIRING. SEE INSTRUCTION MANUAL.

DRAFT INDUCER CONNECTED TO OIL BURNER WITH R8184G CONTROLS



COMPONENTS NEEDED:
 (1) DRAFT INDUCER
 (1) PS1505 FAN PROVER
 (1) 950-1067 RELAY/TIMER
 MAXIMUM AMP LOAD IS 4.4 AMPS